

The ExtraHop Platform

Performance Monitoring and IT Operations Analytics for All Applications and Infrastructure, All the Time, In Real Time

PROBLEM OVERVIEW

ExtraHop provides demonstrated results throughout the application and infrastructure lifecycle:

- **Auto-Discovery**—Maintain a constant and accurate picture of all systems, applications, and their dependencies with zero configuration.
- **Advanced Triaging**—Quickly diagnose and pinpoint problems across the network, web, application, middleware, virtualization, database, and storage tiers.
- **Service Improvement**—Understand performance trends and correlated behaviors across the entire application delivery chain.
- **Enhanced User Experience**—Gain deep visibility into end-user experience.
- **Proactive Early Warning**—Locate small problems before they become major disasters.
- **Capacity Planning**—Get a complete picture of what is happening in your environment for smarter capacity planning and decommissioning of legacy systems.
- **Application Mapping**—Reduce risk for new application deployments delays by examining interdependencies and readiness prior to deployment.

EXTRAHOP PLATFORM

- All-in-one physical or virtual appliances
- Auto-discovery, classification, and mapping of all applications and infrastructure
- Wire-data analysis—from packets to payload (L2-L7) and all transactions
- Passive, non-invasive deployment (network tap or port mirror)

The ExtraHop platform is a passive network appliance built to provide correlated, cross-tier visibility for all applications and infrastructure. ExtraHop automatically discovers, classifies, and maps applications and systems and their relationships, delivering immediate value out of the box and providing application-level visibility with no agents, configuration, or overhead. With real-time analysis of application and user transactions across the network, web, application, virtualization, database, and storage tiers, ExtraHop accelerates troubleshooting efforts, proactively warns of potential problems, and gives IT Operations teams the complete visibility they need to make better and faster decisions.

ExtraHop leads the IT Operations Monitoring category in price, performance, and functionality. A single ExtraHop appliance delivers a sustained 20Gbps of throughput—the fastest and deepest analysis in the industry. What used to require multiple products from different vendors, invasive agents, separate reporting servers, and separate storage can now be done with a non-invasive, all-in-one platform.

Features

L2-L7-Content Analysis

Application wire protocol analysis at the transaction level for clients, applications, middleware, databases, virtualization, network storage, and directory services

Device Auto-Discovery

Automatic discovery, classification, and mapping of all physical and virtual devices, clients, and applications communicating over the network

Advanced TCP Analysis

Simulation of the TCP state machines of endpoints, enabling the most-advanced and insightful TCP analysis in the industry

Enterprise Scalability

Analysis for more than 400,000 HTTP transactions per second, with bulk decryption at 20Gbps and 35,000 SSL handshakes per second for 2048-bit keys

Application Inspection Triggers

Simple and extensible means to rapidly define custom metrics of anything in the header or payload

Geomaps

World and regional maps to answer questions such as where are users coming from and what is their experience

Solution Bundles

Prebuilt, extensible solution bundles support specific applications like SharePoint, ActiveSync, and Citrix VDI, and encourage sharing among ExtraHop's operational intelligence community

Application Activity Maps

Automatically generated maps showing relationships and dependencies between systems, servers, and applications

Trouble Groups

Pre-built intelligent rules immediately expose common acute and chronic problems

Sophisticated Alerting Engine

Built-in advanced alerting engine supports both threshold-based alerts and trend-based alerts, avoiding false positives and creating a framework for smart baselining

Rich Web User Interface

A rich web UI enables users to start at a high-level overview and drill into transaction-level details

One-Click Reporting

Instant, one-click PDF reporting capability as well as customized scheduled reports

Customized Dashboards

Summary views of important metrics for selected applications, including SLA compliance, request volume, and response times

How It Works

Passive, 15-Minute Deployment

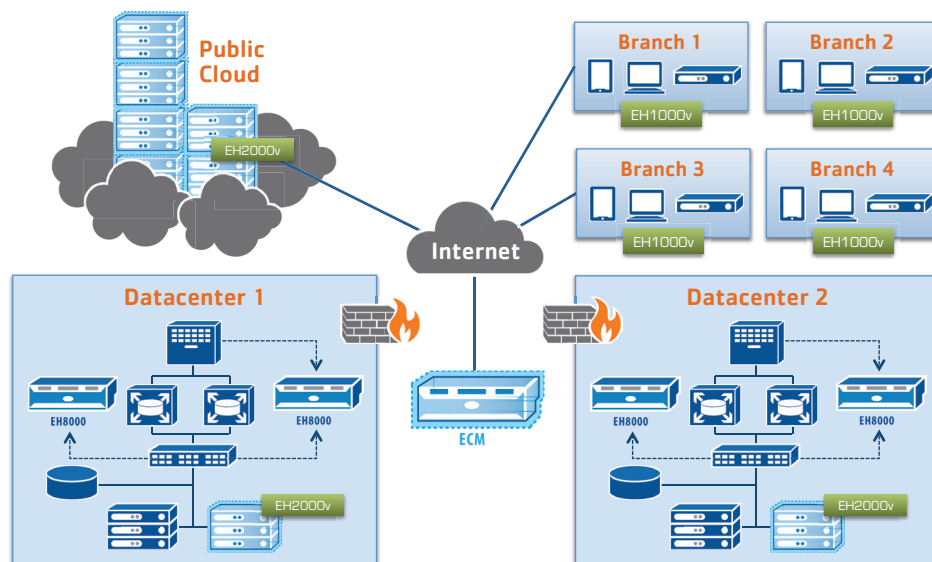
The ExtraHop platform is a completely passive network appliance deployed using a network tap, port mirror, or other data-access technology.

Wire-Data Analysis

While other products only inspect L4 headers, ExtraHop reconstructs all traffic flows, sessions, and transactions to analyze the payload.

Real-Time Datastore

The ExtraHop platform includes a self-contained, streaming datastore for storing and retrieving performance and health metrics in real time.



Platform Specifications

EH8000	2U appliance	20 Gbps continuous analysis	<ul style="list-style-type: none"> Unlimited monitored applications 30+ days of look-back 10 times lower cost than competing application and infrastructure monitoring solutions
EH6000	1U appliance	10 Gbps continuous analysis	
EH3000	1U appliance	3 Gbps continuous analysis	
EH2000v	Virtual appliance	3 Gbps continuous analysis	<ul style="list-style-type: none"> Small-footprint deployment for distributed environments Real-time analysis of virtual traffic confined to VM clusters and private clouds
EH1000v	Virtual appliance	1 Gbps continuous analysis	
ExtraHop Central Manager	Virtual appliance	<ul style="list-style-type: none"> Unified visibility across multiple ExtraHop appliances Centralized administration of groups and alerts Integrated reporting across large, distributed environments 	

About ExtraHop Networks

ExtraHop provides the real-time operational intelligence required to make IT more agile and proactive. The world's best-run IT organizations use ExtraHop to manage more than a half-million devices and monitor billions of transactions daily, including Adobe, Alaska Airlines, Concur, Expedia, and Microsoft.

"We've achieved the 'holy grail' of IT Operations where we're not just remediating problems faster, but preventing problems from occurring in the first place."

—John Hluboky, VP of Technical Operations, Practice Fusion

Alaska Airlines

CARLSON

LexisNexis

Aaron's

Microsoft

shareBUILDER by Capital One

practice fusion
How, with Smart Electronic Health Records.

Concur

NPD GROUP
Behind Every Business Decision

Expedia